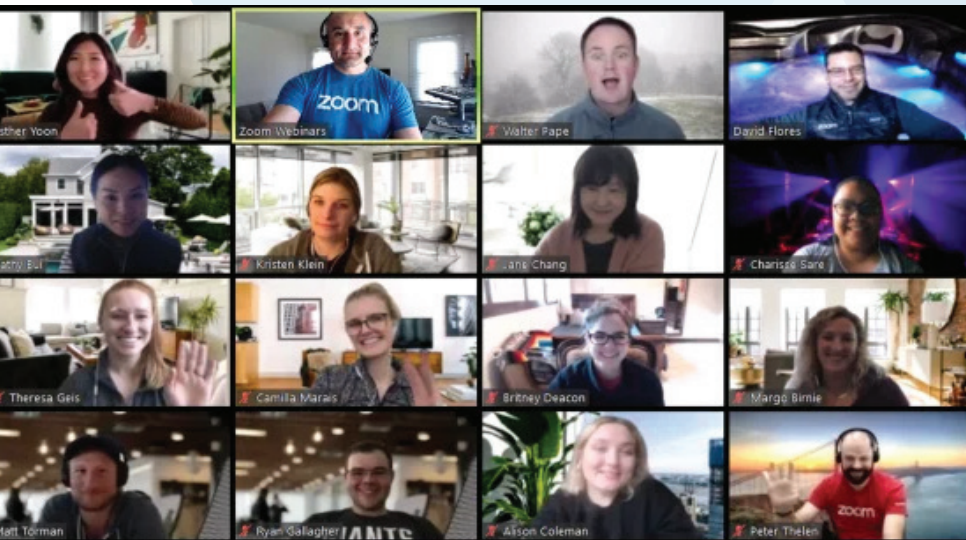


# Everyone A Leader®: Lead Where You Are

## Leadership Development Virtual Workshops

Created by TeamTech, [www.teamtechinc.com](http://www.teamtechinc.com)



Everyone A Leader (EAL) is a pragmatic interactive set of fifteen two-hour virtual workshops. They are designed to give employees at all levels of your organization the methods and tools they need to lead where they are. **The result: Employees think and take action together.**

For Tim DeWeese, Executive Director at Johnson County Mental Health Center, the real turnaround came after adopting the Everyone A Leader mindset. From the front lines to the director, employees felt empowered to lead from their positions.

*"We now had engaged staff which meant we had engaged clients," he said.*

*"In fact, our client 'no show' rate dropped from 35 percent to 12 percent. That's unheard of."*

The department now works with a unified clinical philosophy and approach. The entire organization knows the strategic direction they're headed, and everyone comes to work ready to lead.

*"I figured it would take us five or six years to turn the place around," DeWeese said. "But we're in an incredible place in half that time."*

**100%** of those attending say they would recommend **Everyone A Leader** to their colleagues and peers.

### What You'll Learn

Develop in yourself, your team and your organization the skills to lead where you are.

Learn to shift from:

- **Mind Full** to **Mindful**
- **Directive** to **Collaborative**
- **Tactical** to **Strategic**
- **Static** to **Dynamic**
- **Holding Back** to **Taking Initiative**
- **Reactive** to **Reflective**
- **Siloed** to **Big Picture**

### Foundational Beliefs

- Leadership is a decision, not a job description
- Everyone needs to know how to lead
- Trust comes when you lead where you are with intentionality and authenticity

# Everyone A Leader®: Lead Where You Are

The fifteen workshop format incorporates small group work as well as facilitative apps that make the virtual environment highly interactive. Mind-body science that enhances learning is applied throughout.

EAL Modules	Purpose	Time Frame	Workshop Title
Approach	Adopt an intentional and authentic facilitative style to build trust, achieve stability, take healthy risks – and lead where you are	Two, 2-hour workshops	A Facilitative Approach
			Preparing Yourself
Action	Creating a common vision and moving plans into action	Four, 2-hour workshops	Life Method for Action
			Sustaining Momentum
			Planning Together
			Moving Plans Into Action
Empowerment	Learn how to coach people to empowerment	Two, 2-hour workshops	Life Method for Empowerment
			The ALPS Journey
Thinking Together	Build reflective capacity in yourself and others – that important “pause button” that deepens and broadens insights	Four, 2-hour workshops	Life Method for Thinking Together
			Reflective Conversations
			Revealing Insight
			More Thinking Together Tools
Big-Picture	Filtering initiatives, ideas and actions to gain a comprehensive perspective for next steps	Two, 2-hour workshops	Life Method for Big-Picture Perspective
			Aligning During Change
Lead Where You Are	Identifying and practicing your “go to” EAL skills	One, 2-hour workshop	Your Everyone A Leader Journey

## Pricing

\$1,500/participant; 15 participants minimum, 24 participants maximum

## Scheduling

Workshops can be spaced out to fit your needs. Many clients choose two workshops per week.

## Payment Terms

50% billed once dates are scheduled, payment must be received before workbooks are shipped. No refunds after workbooks are shipped. Balance due prior to the start of the first workshop.

## EAL Workbooks

EAL Workbooks are mailed to the client upon receipt of the first 50% payment. Clients distribute the workbooks to the individual participants. The workshop participant list can be modified up until two days prior to the first workshop.



For additional information or to schedule Everyone A Leader, contact Kathleen Harnish McKune: [kathleen@teamtechinc.com](mailto:kathleen@teamtechinc.com) or **913-706-8797**